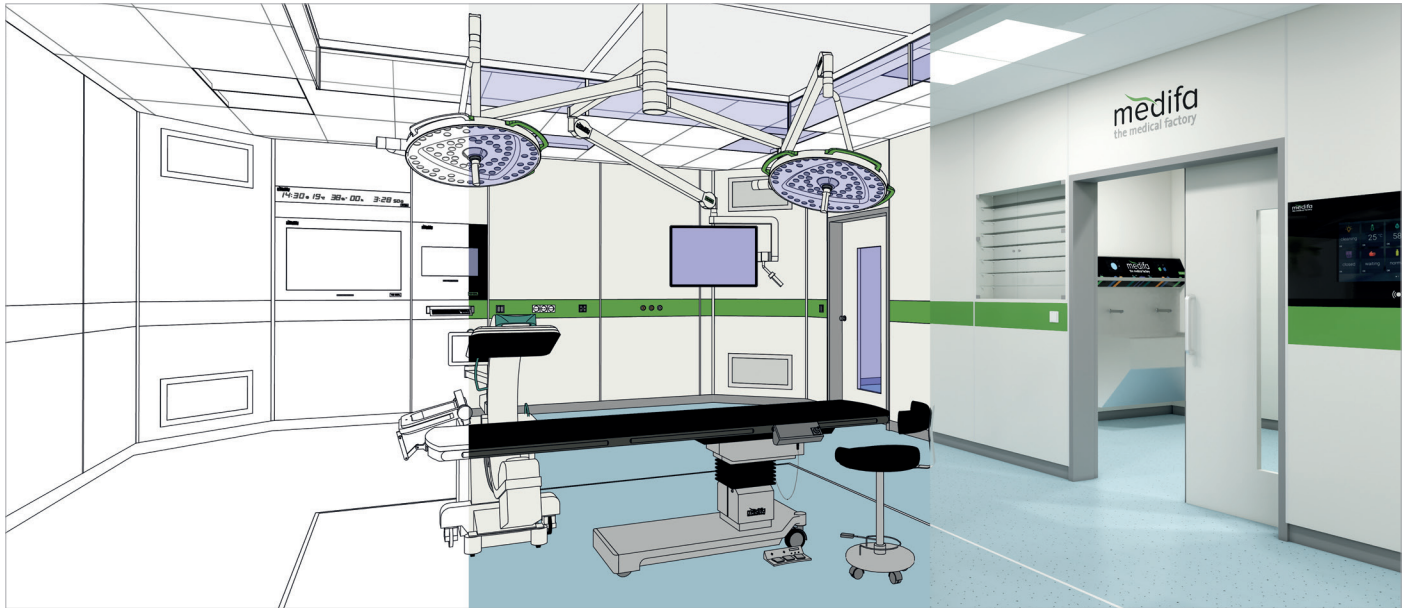




## Modular wall, door and ceiling system

Premium quality customized room systems  
– directly from the manufacturer.

we care.



## One company, one contact person, your advantage.

### Competence

At medifa you will find committed people who master their field. As a globally active, medium-sized company we offer you reliable products, short ways and a permanent partnership. medifa stands for competent advice and support all from one source – one company, one contact person, one solution.

### Service

We see ourselves as a component of your quality assurance. Rapid reaction times and a nationwide customer service sustainably and economically secure your investment.

### In best hands

Together in the medifa healthcare group, we offer you specific know-how on the various investment products in operating theatres. As a full-service provider, medifa offers you a turnkey operating theatre from a single source.

Thanks to 90% added value in our own production in the group of companies, we can implement your requirements quickly and flexibly.

we care.

## Integrated, seamless, perfect match: RooSy, the modular room system by medifa.



medifa hygienic rooms offers you the possibility to create hygienic rooms on the basis of a well-conceived modular system wherever these are needed – the solution is flexible, economical and boasts an individual design.

The modular hygienic room system RooSy guarantees perfectly aligned walls, doors and ceilings.

Thereby, the RooSy room system offers you maximum flexibility. On the basis of modularity, it can adapt perfectly to your requirements. Renovations, expansion or extensions can be implemented easily and on time.

A robust construction, easy-care surfaces and first-class materials ensure optimal hygiene and extreme longevity.

WALLS

DOORS

CEILING

WINDOWS

DESIGN

INTEGRATED  
COMPONENTS





Uncompromised quality:  
Completely from one source. Completely made in Germany.





**We have been a successful supplier and OEM partner of the healthcare sector for more than 40 years. Our experts in all areas are among the best in their field and know the complex challenges in the project business, from construction and production to building site support.**

## ENGINEERING

CAD-Design with SolidWorks, customer and project-specific solutions.

## PLANNING

Implementation planning with Autodesk Revit (BIM), 2D-/3D-Visualization.

## PROJECT MANAGEMENT

Appointment planning, technical clarification, coordination of production steps, building site-related and assembly-friendly logistics.

## PRODUCTION

All RooSy wall, ceiling and door systems by medifa are individually designed, manufactured and pre-assembled in a high-quality value chain at our locations in the cities of Ötigheim and Rastatt (Baden-Württemberg, Germany).

## LOGISTICS AND EXPORT

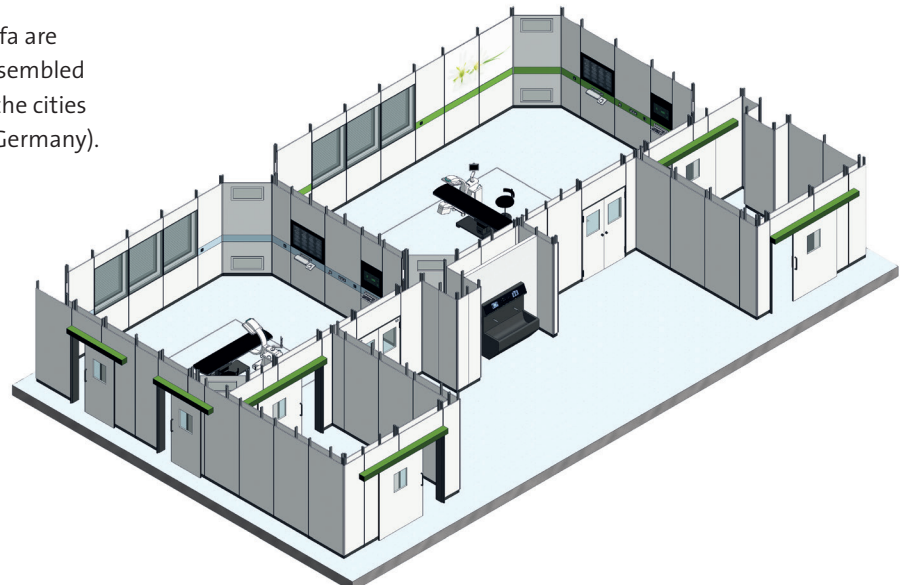
Careful assembly and packaging, processing of all formalities, reliable and on-time delivery.

## ASSEMBLING AND SERVICING

Assembling of modular rooms worldwide, from one source or as a supervisor model supporting and training your assemblers.

## QUALITY

We will assist you all the way to the successful implementation of your project and see ourselves as a reliable component of your quality assurance.



Modular range for your projects.  
Well thought out to the smallest detail.





### SUBSTRUCTURE

Self-supporting substructures for an easy integration of all installations.



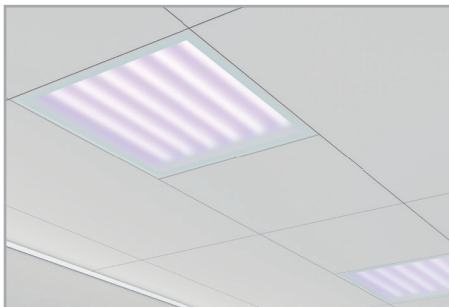
### WALL COVERING

Made of stainless steel, steel sheet, HPL or glass – the application of the elements can be adapted individually.



### DOORS

1-winged and 2-winged doors with flush-mounted door frames. Stainless steel door frames – robust, hygienic and easy to assemble.



### CEILING SYSTEMS AND LIGHTING

Suspended ceilings made of powder-coated steel with covered clamp construction. Integrated flush-mounted LED luminaires are available as an option.



### DESIGN

From the individual design in digital print to coloured, controllable LED luminaires and LED sky panels.



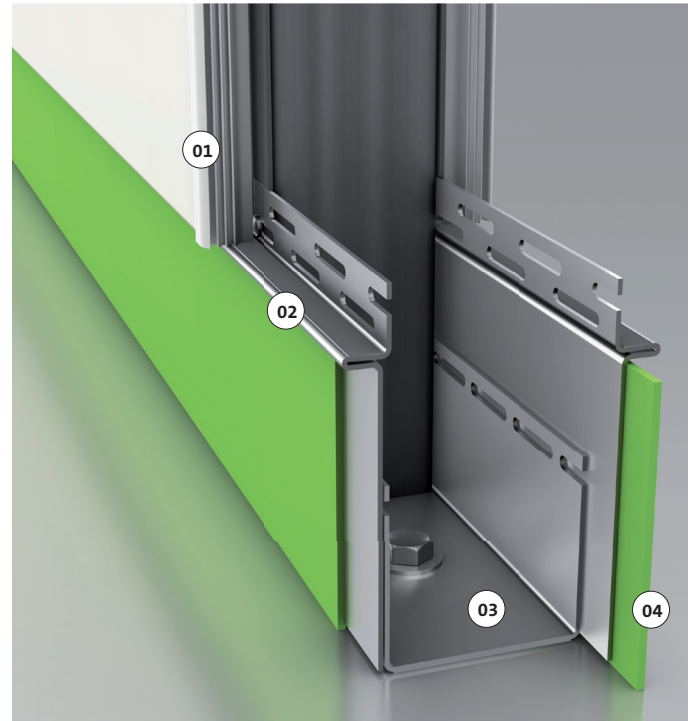
### INTEGRATED COMPONENTS

Integration of windows, monitors, clocks and built-in cabinets as well as industry-specific installations such as OR integration systems.





Space for perfectly usable installations



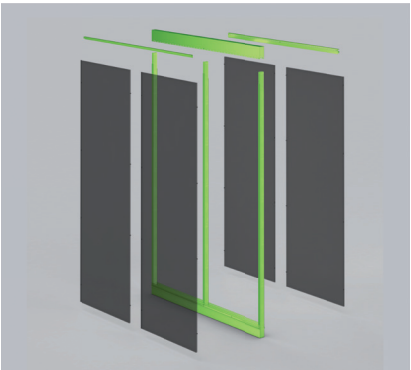
#### Floor rail

- 01 Joint profile
- 02 Base profile
- 03 Floor profile
- 04 Floor covering

# RooSy wall system

## Substructure

The unique, self-supporting substructure offers you detached capacity from the beginning – perfect for a smooth interaction between all units, as the installation process can be started at the same time. The substructure will be delivered pre-fabricated or scalable and boasts a convincingly short assembling time.



### ROOSY WALL SYSTEM: SUBSTRUCTURE

Floor rail			
Material	U-profile made of 1.5 mm strong galvanized steel		
Mounting	In the screed: Mounted with screws and dowels In the unfinished floor: Mounted with threaded bolt and dowels		
Alignment	Galvanized base profile to the alignment of the wall elements		
Connection to the unfinished ceiling			
Material	U-profile made of 1.5 mm strong galvanized steel		
Mounting	Mounted with screws and dowels		
Secondary structure	The secondary structure will be adapted to the conditions on site		
Profile support			
Material	Galvanized steel pipes, strength 2 mm		
Wall thickness with double-shell design			
Wall thickness	100 mm	200 mm	> 200 mm
Space within the wall	60 mm	160 mm	> 160 mm
Recommended for the installation of	Power plugs and switches	Installation cables < DN 100 (e.g. installation of a control panel), air ducts	Static cladding, built-in cupboards, air ducts
Statics - tested			
DIN 4103-1:2015; DIN 18183-1:2018; ETAG 003:2013			



### Example of a wall with individual digital printing

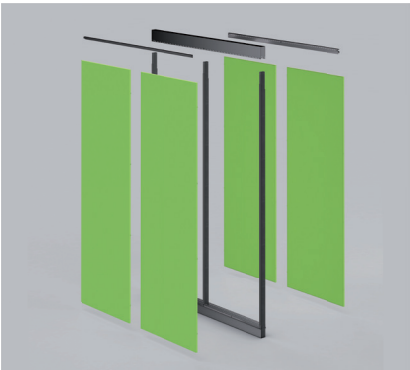
- 01** Wall elements made of stainless steel with individual digital printing (robust against standard disinfectants and detergents)
- 02** Wall elements made of stainless steel, with antibacterial coating
- 03** 200 millimetres high wall element made of stainless steel, coloured powder-coated (antibacterial) as installation element for the organized installation of switches and power plugs
- 04** SensoClean - interactive scrub-up trough



# RooSy wall system

## Wall covering

Freedom of design and hygiene: The RooSy wall system offers a broad range of coverings, from polished stainless steel and coloured powder-coated to 3 metre high glass elements. The internal closed-pored sealing tape ensures pressure tightness (against excess and negative pressure). The easy to install and removable silicone joint ensures hygienic and dust tight joints between the elements as well as easy cleaning. All wall elements can be disassembled quickly and in a dirt-free way to facilitate easy access to lower installations.



### ROOSY WALL SYSTEM: WALL COVERING

Standard sizes					
Grid width	1200 mm				
Height	One piece up to max. 3000 mm (taller rooms will be implemented in several parts)				
Mounting					
The wall elements will be mounted with spring clamps and self-tapping screws to the substructure.					
Material and possible surfaces					
Material	Stainless steel sanded	Powder-coated	Powder-coated, antibacterial	Lacquered	Digital printing
Wall element steel		x	x		x
Wall elements stainless steel	x	x	x		x
Glass wall element (thermally toughened safety glass)				x	x
Glass wall element LSG (laminated safety glass)				x	x
HPL					x
Tightness					
The wall elements are hygienically connected and airtight circumferentially airtight one underneath the other.					
Joint profile					
The joint is closed with a silicone profile.					
This joint profile can easily be disassembled and is available in different colours.					
Material	HTV-Silicone, SH 75° ± 5° Tolerance according to DIN / ISO 3302-1 E2, the silicone raw material utilized meets the FDA-DFR 21 – Part 177.2600 and is rated as safe by food-regulations.				
Radiation protection					
Radiation protection (mm Pb)	0,5 / 1,0 / 1,5 / 2,0 / 3,0				
Sound insulation					
44 dB without additional insulation, higher sound protection values can be reached with additional insulation.					



**Above: Example of a wall with illuminated glass elements and digitally-printed sliding door**

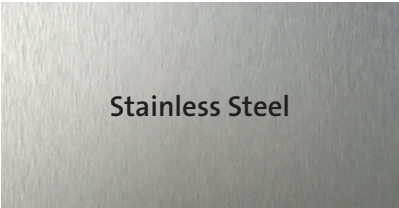
- 01** Sliding door with coloured powder-coated box rail with individual digital printing
- 02** Flush-mounted integrated window with optional blinds
- 03** Individually designed LED glass element
- 04** Wall elements made of stainless steel, antibacterial coating

**Lower right: Example of wall with powder coating and digital printing**

- 01** Wall element made of tempered safety glass (ESG) individual digital print
- 02** Hinged door with window
- 03** Flush-mounted installations, e.g. flat-screens, surgical information display and suture cabinets.
- 04** Wall elements made of stainless steel, antibacterial coating

# RooSy wall system

## Wall covering



### Operating Room (OR)

### Intensive Care Unit (ICU)

#### ROOSY WALL SYSTEM: SURFACE

Wall surfaces and design options	
Surface	Description
Stainless steel sanded	Grinded and brushed
Powder-coated	Mixed powder coating on the basis of epoxy polyester resins according to DIN 67530, silk matte, gloss level 60°
Powder-coated, antibacterial	Mixed powder coating with antibacterial effect (according to Japanese norm JIS Z 2801)
Glass lacquered	Lacquered on the reverse side
Digital printing on steel	Individual printing on powdered metal
Digital printing on glass	Individual printing on the reverse side of the glass element
HPL Classic	In plain colours
HPL Premium	With premium or wooden decor







Further details on additional types of door – such as fire doors, hermetic doors, full height doors, soundproof doors or glass sliding doors – are available upon request simply by phoning +49 (0)7222 78368-0 or emailing [info.hygienic-rooms@medifa.com](mailto:info.hygienic-rooms@medifa.com).

# RooSy doors

## Hinged doors

### ROBUST AND DURABLE

The aluminium frame in the door panel ensures high rigidity of the door panel. The 40 mm door panel strength offers an optimal relation between function, quality and user-friendliness.

### HYGIENIC AND EASY TO CLEAN

The hinged doors of the RooSy room system have a closed frame. Based on the flush-mounted installation of the frame and the door panel, our hinged doors are resistant to the deposition of dirt and dust – the optimal solution for maximum hygiene. More-over, the smooth joins without rough edges can be cleaned very easily.

### ROOSY DOORS: HINGED DOORS

Design	1-winged	2-winged		
Measures				
Grid width	800 – 1300 mm	1500 – 2000 mm		
Frame height	2150 mm	2150 mm		
Frame depth	100 – 400 mm, also individually adaptable	100 – 400 mm, also individually adaptable		
Features (optional)				
Automatic operation	According to DIN 18650 / EN 16005	According to DIN 18650 / EN 16005		
Security sensors	According to DIN 18650 / EN 16005	According to DIN 18650 / EN 16005		
Floor seal	Retractable floor seal	Retractable floor seal		
Radiation protection	0,5 – 3 mm PB	0,5 – 3 mm PB		
Possible material and surfaces				
Frame	Stainless steel sanded	Stainless steel sanded		
	Stainless steel powder-coated	Stainless steel powder-coated		
Door panel	Stainless steel sanded	Stainless steel sanded		
	Stainless steel powder-coated	Stainless steel powder-coated		
	Stainless steel powder-coated with individual design printing	Stainless steel powder-coated with individual design printing		
Door filling	Tubular chip board	Tubular chip board		
	Foam core XPS	Foam core XPS		
Optional windows and related equipment				
Measures	450 x 600 mm	600 x 600 mm	800 x 600 mm	450 x 1500 mm
Blinds	x	x	x	x
Laser protection blinds	x	x	x	
Radiation protection	Up to 3 mm	Up to 3 mm	Up to 3 mm	Up to 2 mm



Further details on additional types of door – such as fire doors, hermetic doors, full height doors, soundproof doors or glass sliding doors – are available upon request simply by phoning +49 (0)7222 78368-0 or emailing [info.hygienic-rooms@medifa.com](mailto:info.hygienic-rooms@medifa.com).



# RooSy doors

## Sliding doors

### EASY TO ASSEMBLE

Sliding doors from the RooSy room system are entirely pre-assembled in the plant. This even includes the complete fitting of the box rail which guarantees particularly quick and easy assembly.

### ROBUST AND DURABLE

The aluminium frame in the door panel ensures the high rigidity of the door panel. The 40 mm door panel strength offers an optimal relation between function, quality and user-friendliness.

### SMOOTH AND QUIET

Thanks to the double-gummed mounting of the sliding rail, the door panel operates extremely smoothly and quietly.

### ROOSY DOORS: SLIDING DOORS

Design	1-winged	2-winged		
Measures				
Grid width	900 – 1800 mm	1200 – 2000 mm		
Frame height	2150 – 2250 mm	2150 – 2250 mm		
Frame depth	100 – 400 mm, also individually adaptable	100 – 400 mm, also individually adaptable		
Features				
Automatic operation	According to DIN 18650 / EN 16005	According to DIN 18650 / EN 16005		
Security sensors	According to DIN 18650 / EN 16005	According to DIN 18650 / EN 16005		
Floor seal	Retractable floor seal	Retractable floor seal		
Radiation protection	0,5 – 3 mm PB	0,5 – 3 mm PB		
Possible material and surfaces				
Frame	Stainless steel sanded	Stainless steel sanded		
	Stainless steel powder-coated	Stainless steel powder-coated		
Door panel	Stainless steel sanded	Stainless steel sanded		
	Stainless steel powder-coated	Stainless steel powder-coated		
	Stainless steel powder-coated with individual design printing	Stainless steel powder-coated with individual design printing		
Door filling	Tubular chip board	Tubular chip board		
	Foam core XPS	Foam core XPS		
Optional windows and related equipment				
Measures	450 x 600 mm	600 x 600 mm	800 x 600 mm	450 x 1500 mm
Blinds	x	x	x	x
Laser protection blinds	x	x	x	—
Radiation protection	Up to 3 mm	Up to 3 mm	Up to 3 mm	Up to 2 mm

# RooSy ceiling systems

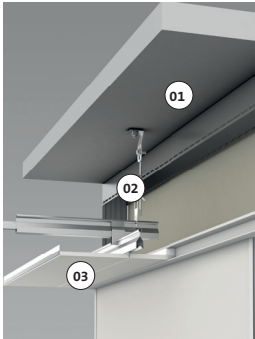
## Ceiling and lighting

Pressure-tight and dust-tight ceilings, lighting as requested: the suspended metal-panelled ceiling of RooSy with covered clamp construction is characterized by its unobtrusive appearance and excellent workmanship.

With the ceiling rail, the integration into the RooSy wall system is fast, clean and safe. The LED lights controlled by toggle switches or sky panels move your rooms into the right light for a needs-oriented, individual and energy-saving solution.

### ROOSY CEILING SYSTEMS: CEILING AND LIGHTING

Metal-panelled ceiling	
Meets the normative requirements according to DIN / EN 13964	
Standard grid	600 x 600 mm and 600 x 1200 mm
Material and colour	0,8 mm strong, electrolytically-galvanized metal sheet, standard powder-coated in RAL 9016
Design options	Can be imprinted individually
	Powder-coating in RAL colours according to your wishes
Removable	Yes (with a vacuum lifting tool)
Flush-mounted integrated LED luminaires	
Standard grid	600 x 600 mm and 600 x 1200 mm
Material and colour	Metal sheet, powder-coated in RAL 9016
Lower cover	Thermally toughened or laminated safety glass, prismatic acrylic
Design options	RGB-W, RGB
Flush-mounted integrated LED sky panel	
Standard grid	600 x 600 mm and 600 x 1200 mm
Material and colour	Metal sheet, powder-coated in RAL 9016
Lower cover	Thermally toughened or laminated safety glass, prismatic acrylic
Design options	Can be imprinted individually



#### Ceiling construction

- 01 Raw ceiling
- 02 Suspension system
- 03 Ceiling cassette

#### Example ceilings design



Hygienic room with a metal-panelled ceiling using a standard grid 600 x 1200 mm, featuring flush-mounted integrated LED lights



Flush-mounted integrated LED sky panel, can be imprinted individually

## RooSy optional features Design

The modular room system RooSy by medifa offers you various possibilities to adapt your rooms perfectly to your design ideas and to your corporate design scheme:

### WALL ELEMENTS AND DOORS

- Powder-coating in the colour you wish
- Individual digital printing
- Illuminated and/or individually printed glass elements or windows with the latest LED technology
- Glass elements with individual laser engraving



# RooSy optional features

## Integrated components

Flush is the magic word, if the highest possible hygiene and easy cleaning are required. We at medifa offer you a perfect all-round service for a premium integrated installation. Here, we cooperate with numerous renowned manufacturers whose components are exactly adapted to the RooSy room system. Of course, we integrate installations for you according to your wishes and from your supplier.



User-friendly room control: flush-mounted integrated INTUITIVE Console



Best sight: Flush-mounted integrated monitor and surgical information display



Hygiene: SensoClean interactive scrub-up trough



Welcome: One-wing sliding door with individual digital printing, colour powder-coated box rail and LED glass element

(Flush-mounted integrated) WINDOWS	
Size (W x H)	Maximum 1200 x 3000 mm
Material	6 mm thermally toughened safety glass (clear) according to DIN EN 12150
Intermediate frame	Inside circumferential in stainless steel (sanded)
Options	Individual printing
	Inside electrical blinds
	Radiation protection glass
	Design as LCD glass element
	Switchable frosted glass



## RooSy Cabinets: Flush integrated storage systems

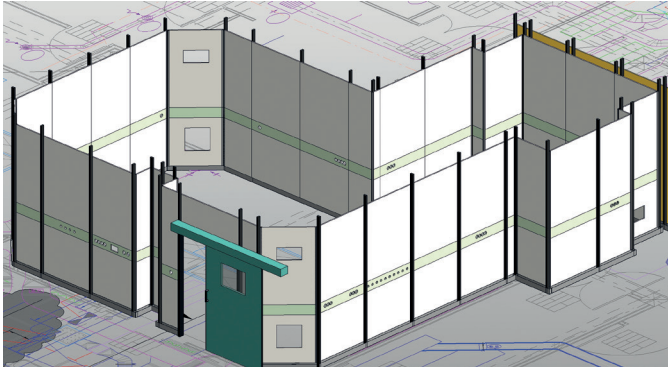
- Cabinet solutions integrated evenly into the wall surface
- Versatile applications, individually configurable
- Modular adaptability to your requirements
- DIN, ISO or STE standard
- Easy loading and unloading
- Tall cupboards, base cupboards, wall cupboards and top cupboards
- Quiet, noise-insulating drawers with telescopic pull-out
- Optimum cleaning and disinfection
- possibilities
- Wide range of accessories
- On request with LED lighting, locking system or warming drawers
- Modern and ergonomic design
- Robust, durable all-metal sandwich construction for lower weight



## RooSy room system by medifa: already a good decision in many projects.

### FRANCE - BRIVE

- Reconstruction of 2 rooms to an operating theatre during operation
- Wall system, sliding door (2mm Pb), ceilings, lights



### FRANCE - DREUX

- Reconstruction of 2 operating theatres and 2 anaesthesia rooms during operation
- Wall system, swing doors (2mm Pb), ceilings, lights



## The medifa healthcare group unites competence concerning operating rooms under one roof.

medifa is an owner-run and internationally active complete solution provider in the medical technology.

The product and service portfolio covers all operating room requirements from modular wall, door, ceiling and cabinet systems (RooSy® Room Systems) for the turnkey operating room, as well as mobile operating tables, operating table accessories and operating lights, right up to examination chairs and medical

furniture. In addition, one of the largest German OEM suppliers in the medical technology sector also belongs to medifa.

medifa GmbH & Co. KG (Finnentrop), medifa hygienic rooms GmbH (Ötigheim) and medifa metall und medizintechnik GmbH in Rastatt are all part of this group of companies. The medifa healthcare group employs approximately 350 employees at three locations within Germany. The planning, engineering and production

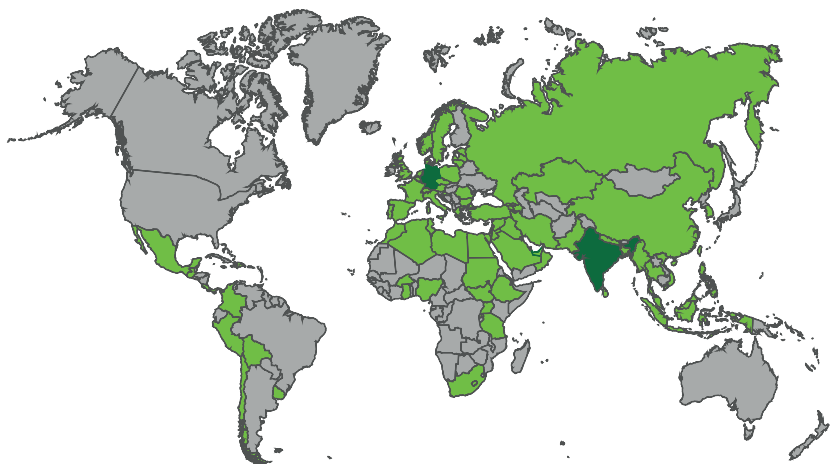
take place exclusively in Germany, and with over 90% added value in the group of companies, the group guarantees fast reaction times.

The slogan “we care” means for us that we consistently orientate ourselves according to the requirements of our customers. Customers all over the world can rely on top-class consultation, processing and quality from a single source, made in Germany according to certified national and international quality standards.

## Products

- Modular operating room systems: walls, doors, ceilings and cabinets (RooSy)
- Mobile operating tables and accessories
- Operating lights
- Examination and treatment chairs
- Medical furniture and trolleys
- Customized medical solutions

## medifa worldwide



we care.



**medifa hygienic rooms GmbH**

Heinrich-Hertz-Straße 4

76470 Ötigheim | Germany

fon +49 (0) 7222 78368-0

fax +49 (0) 7222 78368-90

info.hygienic-rooms@medifa.com



Version 01-20-EN

Data subject to change without notice.

[www.medifa.com](http://www.medifa.com)

we care.